



Model Year 2026 Sponsor Proposal



About The Team

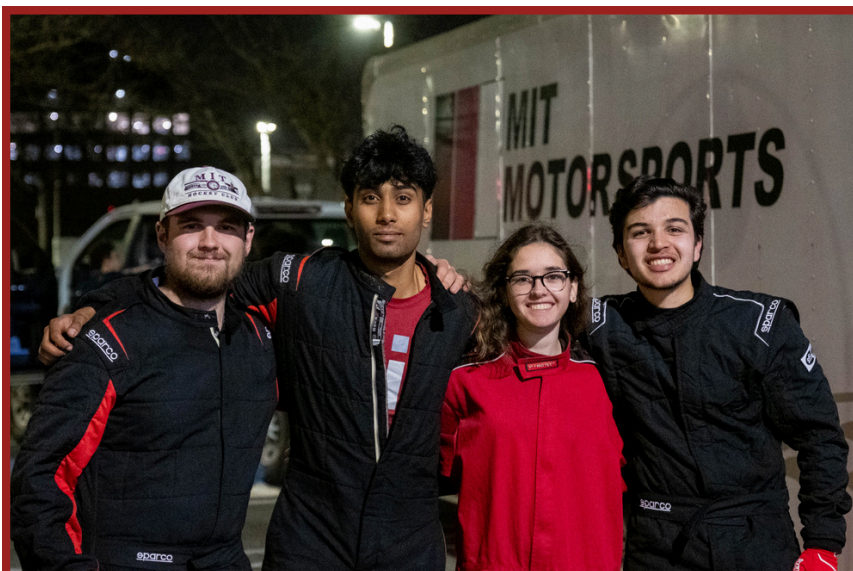
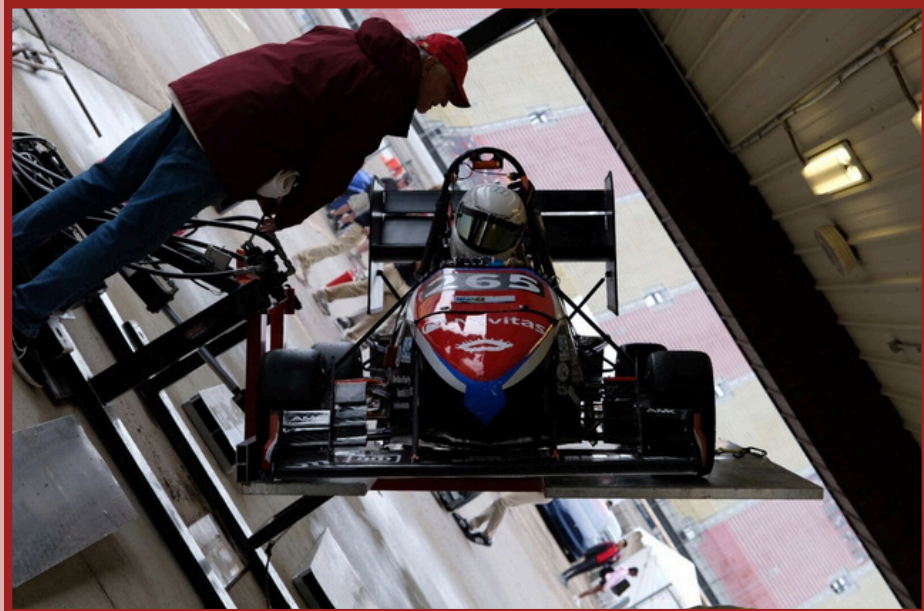


MIT Motorsports is a student-run team that designs, builds, and tests a fully electric race car from the ground up in under a year.

We compete in Formula SAE Electric and Formula Hybrid+Electric, participating in dynamic events such as endurance, autocross, and acceleration, as well as static events like design, project management, and business presentations—evaluated by industry experts.

Since our founding in 2001, MIT Motorsports has evolved from an internal combustion team to a leading force in electric racing. We have earned first place in Engineering Design for two consecutive years ('24 and '25) and ninth overall out of eighty-six teams.

With over 100 members, our team advances the frontiers of mechanical, electrical, aerodynamic, and software engineering—delivering increasingly innovative race cars each year.



113 Members
45% Women
74% Underclassmen
44% Undergraduate First-Years

0-60 in 2.5 seconds
Top Speed of 90 mph
Total Weight of 215 kg

Through The Years



MY1

MIT Motorsports was founded in 2001 by first-year undergraduates Rich James and Nick Gidwani with the goal of applying classroom knowledge to real-world engineering challenges. Model Year 1 marked the beginning of over two decades of innovation.



MY15

The team built its final combustion engine race car in 2012, ending the era on a high note with double top-five finishes. MY15 marked MIT Motorsports' transition to electric, debuting both our first electric powertrain and aerodynamics package.



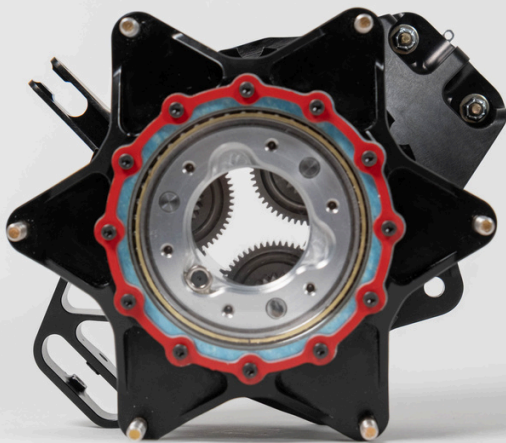
MY18

MY17 delivered a strong performance with a second-place overall finish. The following year, MY18 was recognized as the fastest car at the competition.

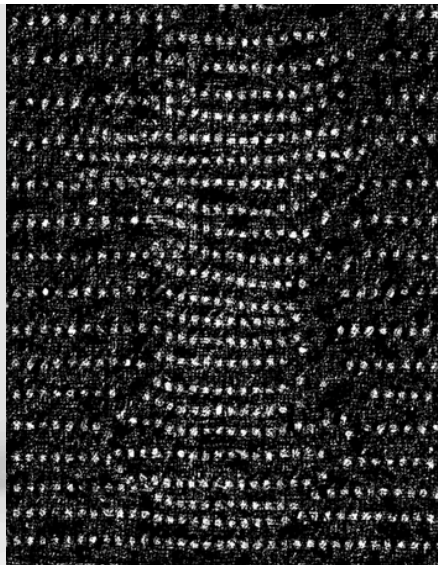


MY25

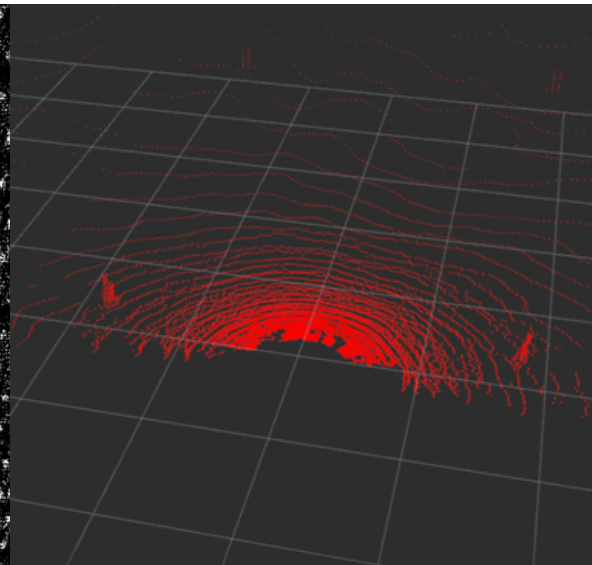
MY25 marked MIT Motorsports' first successful four-wheel drive race car, powered by four AMK motors and two inverters. Featured below is our epicyclic gearbox. Also shown are scans from our Ouster OS1 LiDAR, which—along with three Teledyne cameras—will be integrated into MY26 to enable our first fully autonomous race car. MY26 will also feature custom, dynamometer-tested inverters.



MY25 Gearbox



Ouster OS1 LiDAR
of Fire Hydrant



Ouster OS1 LiDAR
of Cones on a Track


Support Our Journey

Model Year 2026: Projected Budget of \$215,000 USD

As a non-profit, student-run organization, MIT Motorsports depends on the generosity of sponsors, alumni, friends, and family through both monetary and in-kind contributions. Donations can be made by check, ACH, or wire transfer. Tax-deductible gifts may also be made by credit card through the MIT Giving website (<https://giving.mit.edu/>) by selecting either the MIT Motorsports Expendable Fund or the MIT Motorsports Endowment Fund.

MIT Motorsports benefits from both the financial support of sponsorships and the lifelong connections built with our sponsors.

Our sponsorship tiers outline clear benefits, ranging from brand visibility to recruitment opportunities. Sponsorships begin with a signed agreement and may be renewed annually.

	Affiliate* \$1,000+	Bronze \$2,500+	Silver \$5,000+	Gold \$10,000+	Platinum \$20,000+
Invitation to Team Events	X	X	X	X	X
Logo on Website	X	X	X	X	X
Logo on Team Apparel		X	X	X	X
Logo on Race Car		small	medium	large	wing
Social Media Recognition			1x	2x	4x
Team Resume Book Access			X	X	X
Networking Event with Team				X	X
Title Benefits (appreciation package, racing workshop, car access)					X

*recognized as a donation instead of a sponsorship

Connect With Us



Fuel Our Drive to Win

fsae.mit.edu

fsae-business@mit.edu

265 Massachusetts Avenue,
Cambridge, MA 02139

Instagram: [@mitmotorsports](https://www.instagram.com/mitmotorsports)

Youtube: [@mitmotorsports4919](https://www.youtube.com/mitmotorsports4919)

facebook.com/mitfsae/

linkedin.com/company/mitmotorsports/



fsae.mit.edu

fsae-business@mit.edu